

SKIRTING INSTALLATION GUIDE

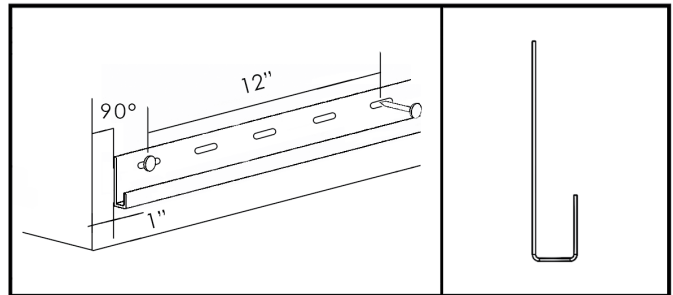
NOVI EXTERIOR SIDING PANELS



BARRON
DESIGNS

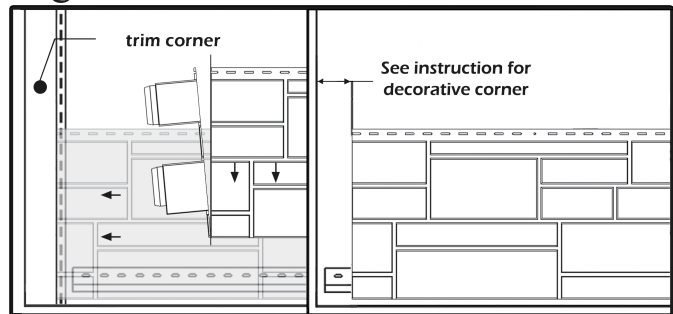
3- Install the starter strip at the lowest point of the structure so that it is set at a maximum of 1" from the corner wall allowing for the width of the corner piece. Ensure it is perfectly level and square and nail down every 12". (Figure B) If you have to cut the bottom of the panels, the starter strip can no longer be used, so pass to the next step.

Figure B



4- Cut the left side of the panel in a straight line. Measure the wall length to determine where to cut your first panel in order to avoid having a very small piece at the right end of the wall. Insert the first panel into starter strip and slide it in the trim corner. (Figure C) If you have to cut the bottom of the first row it will become necessary to secure the bottom of panels by nailing it in a horizontal strapping. At a concealed spot, like the mortar line, pre-drill holes wider than the nail but not as wide as the nail head. Each full length panel must be nailed by 5 nails. (Figure D) - When using decorative corners: Read installation instructions for corners to ascertain proper distance for positioning the panel from end of wall. (Figure C)

Figure C

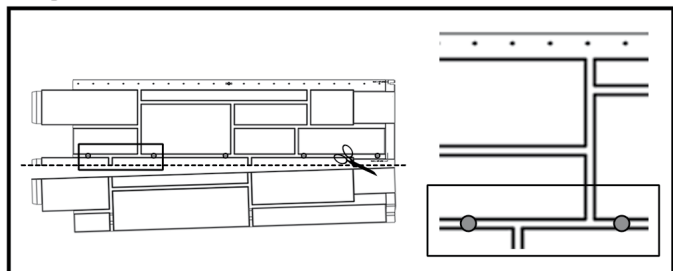


5- Install the following panel at the proper spacing according to the outdoor temperature (Figure E)(see siding installation guide for more detail).Nail in the center hole and in the installation holes.

Note:

If a piece of a panel does not have the initial center hole directly in the middle, drill a new center hole of 1/8" diameter at the same height as the other installation holes.

Figure D

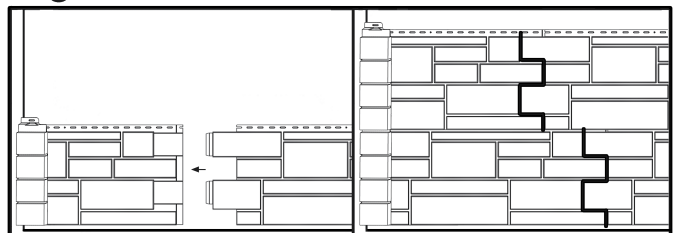


6- Repeat step four and five with succeeding panels and rows. ing the first panel with 16" increment from the cutting line of the first row. To eliminate stacking seams, alternate the cut positions for the following rows. (Figure E) (see siding installation guide for more detail)

Hints:

Leave a removable section for underside access as required. Panels can be cut and vents can be installed if needed, check your local ordinances for the amount of ventilation required.

Figure E



SKIRTING INSTALLATION GUIDE

NOVIK EXTERIOR SIDING PANELS



Decorative corners installation

Stone corners

1- The installation of corners begins once you have completed two adjacent walls.

Note:

For proper installation and optimal corner appearance, make sure that the ends of siding panels finish at 3 1/2" from the corner of the wall and at an equivalent height.

2- For the first corner, insert the hooks into the starter strip (J.1) and be sure to overlap the ends of each row's panels. Fold back the top of the part toward the corner of the wall (J.2), then nail through the oblong holes (J.3). (Figure J)

3- For all subsequent corners, insert the hooks into the openings of the previous corner. Fold back the top of the corner toward the wall, then nail through the oblong holes. Repeat this step to the top of the wall. (Figure K)

4- For the last corner only, cut excess from part. On each side of the corner, make a hole wider than the shaft of the nail, but smaller than the head. Affix a nailing strip behind these locations to fasten corners firmly. Fold back the top of the corner and nail it down. (Figure L)

Figure J

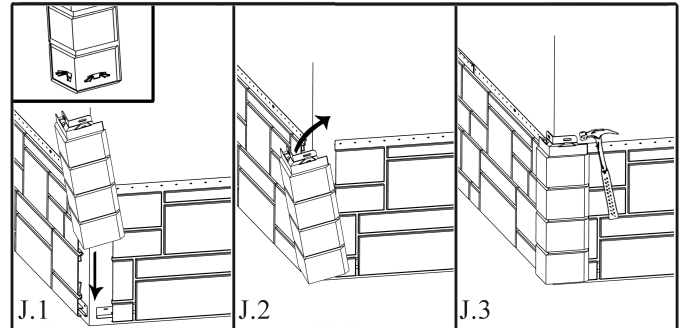


Figure K

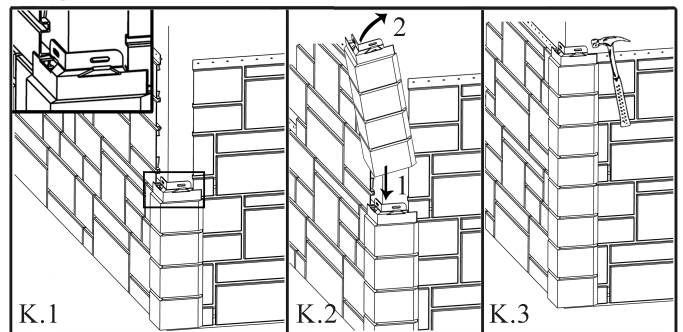
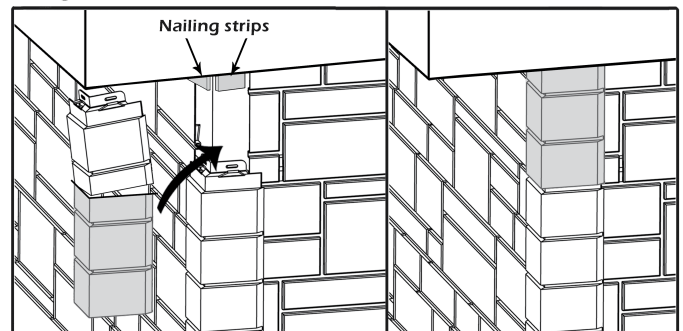


Figure L



- Do not set accessories directly on the siding. The fasteners must be fixed on a solid surface.
- These instructions are installation guidelines. Your local building code instruction for skirting installation supercedes these instructions..
- Installed siding is considered acceptance of product and no claims for color match will be honored after installation.
- It is the responsibility of the contractor and/or the installer to ensure siding panels are installed in accordance with these instructions and any applicable building codes.
- Manufacturer assumes no liability for either improper installation or personal injury resulting from improper use or installation.