

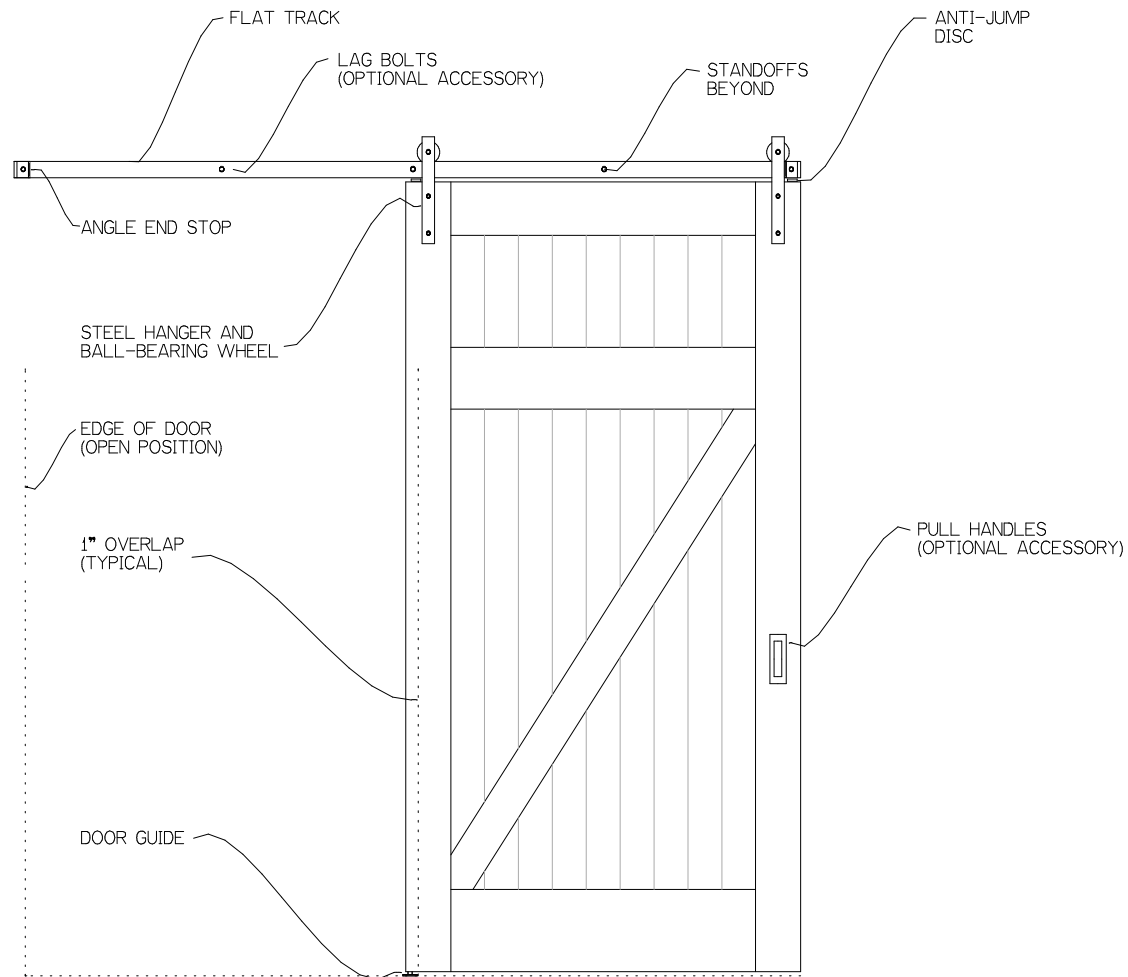
!CAUTION!

- Mishandling of heavy objects (i.e., doors) may cause a loss of balance and severe injury. Always be sure you have a secure hold on the item and that the objects are balanced before moving. Always wear safety shoes when lifting heavy objects.
- Getting body parts (i.e., hair, fingers) caught in moving parts may cause pinching and severe injury. Do not put fingers in parts that may move and always remove or contain anything on your body that may become entangled with a moving part.
- Closing sliding doors with your hand on the end of the door may result in your hand or fingers, getting caught between the door and other solid objects (i.e., another door, molding), causing severe injury. Always use the door handle to operate doors.

NOTICE: Use of excessive force when opening and closing the door(s) may damage the hardware. Always hold the handle and gently open and close the door(s).

⚠ WARNING!

- Failure to wear proper safety gear (i.e., eye protection) may result in serious injury or death. Always wear proper safety gear before using power tools.
- Improper operation of power tools may result in loss of control, serious injury or death. Always ensure you have complete control of the power tool and the work area is free of hazards before operating any tool.
- Lack of secure clamping of the door may result in unexpected movement of the door, loss of power tool control and serious injury or death. Always securely clamp the door in place before cutting or drilling the door.
- Lack of nor improperly installed Anti-jump Disc may result in the door coming off the track and cause serious injury or death. Installation of Anti-jump Disks is required for the safe operation of this hardware. Installed correctly, these discs will keep the door securely attached to the track.



GENERAL NOTES:

ACTUAL TRACK LENGTHS ARE 1" LESS THAN 2X THE NOMINAL DOOR WIDTH (i.e., A 36" WIDE DOOR WOULD HAVE A 71" TRACK).

TRACK STANDOFFS ARE AVAILABLE FOR DOORS UP TO 2-1/4" THICK.

DOORS MORE THAN 1" OVER TYPICAL SIZES (i.e. 37" ON A NOMINAL 6" TRACK) REQUIRE THE TYPICAL HANGER OFFSET BE ALTERED. SEE INSTALLATION CUT SHEET FOR MORE INFORMATION.

IF YOUR DOOR IS A CUSTOM SIZE (i.e. 40"), YOU WILL HAVE TO REPOSITION ONE END STOP, DRILL ONE HOLE AT DESIRED LOCATION AND USE HEX BOLT TO FASTEN (NOT INCLUDED). YOU MAY ALSO USE ADJUSTABLE END STOPS (OPTIONAL ACCESSORY) OR REQUEST A CUSTOM FABRICATION.

FOR BI-PARTING DOORS, BUTT THE TRACK OF EACH KIT END TO END TIGHTLY. JOINING TRACKS IS NOT NECESSARY.

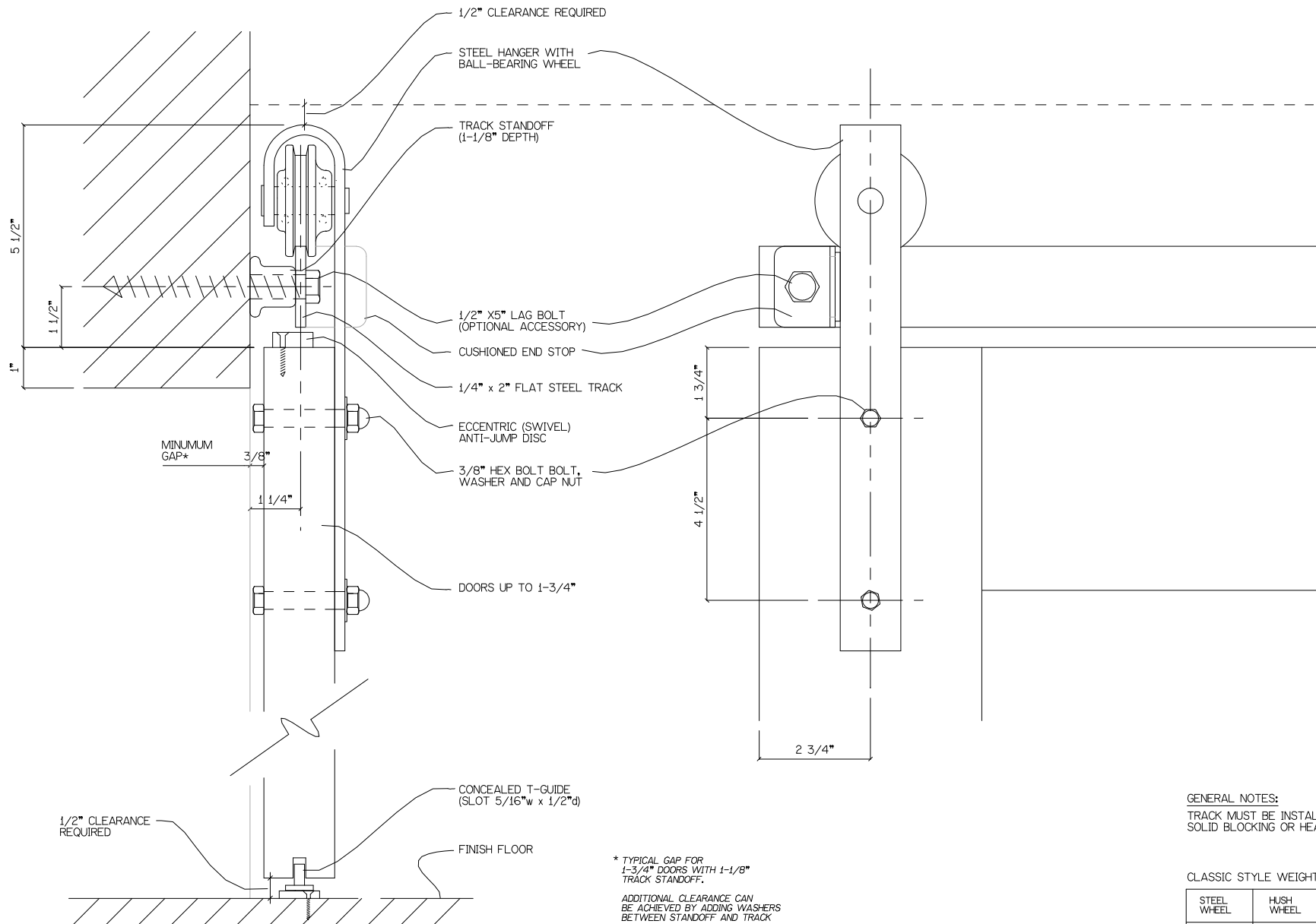
REALCRAFT
9770 44th Ave NW
Suite 104, Gig Harbor
Washington - 98332

CLASSIC FLAT TRACK - SINGLE DOOR OVERVIEW

This print is property of RealCraft and is loaned to the recipient for reference purposes. All contents on this sheet are confidential and must not be copied, submitted, or shared with third parties for examination without RealCraft's express written consent.

DRWG NO:

DATE:



* TYPICAL GAP FOR
1-3/4" DOORS WITH 1-1/8"
TRACK STANDOFF.
ADDITIONAL CLEARANCE CAN
BE ACHIEVED BY ADDING WASHERS
BETWEEN STANDOFF AND TRACK

GENERAL NOTES:
TRACK MUST BE INSTALLED INTO
SOLID BLOCKING OR HEAD CASING.

CLASSIC STYLE WEIGHT RATINGS**

STEEL WHEEL	HUSH WHEEL	WOOD WHEEL
400 LBS	400 LBS	80 LBS

**RATING PER PAIR OF HANGERS

REALCRAFT
9770 44th Ave NW
Suite 104, Gig Harbor
Washington - 98332

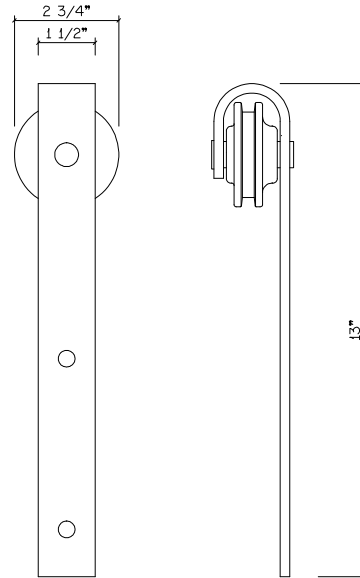
CLASSIC FLAT TRACK - DOORS UP TO 1-3/4"

DESCRIPTION/NOTES: SECTION AND ELEVATION VIEWS

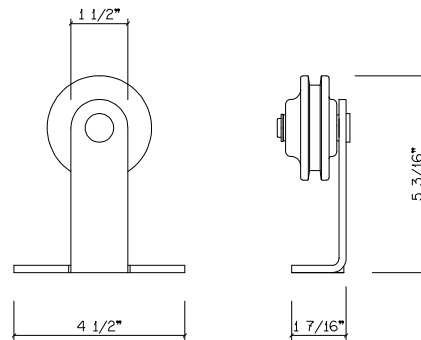
This print is property of RealCraft and is loaned to the recipient for reference purposes. All contents on this sheet are confidential and must not be copied, submitted, or shared with third parties for examination without RealCraft's express written consent.

DRWG NO:

DATE:



CLASSIC STYLE
HANGER



AERO STYLE
HANGER

REALCRAFT
9770 44th Ave NW
Suite 104, Gig Harbor
Washington - 98332

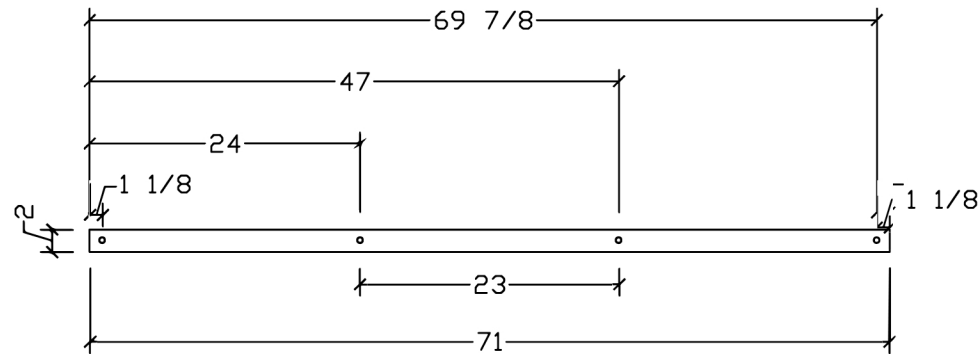
CLASSIC FLAT TRACK - HANGER STYLES

DESCRIPTION/NOTES:

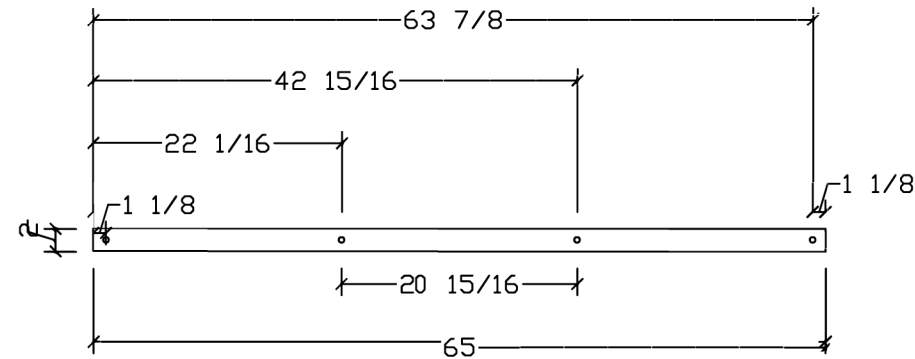
This print is property of RealCraft and is loaned to the recipient for reference purposes. All contents on this sheet are confidential and must not be copied, submitted, or shared with third parties for examination without RealCraft's express written consent.

DRWG NO:

DATE:



Standard Flat Track- SF-06
Track Length: 71" (One-Piece Track)



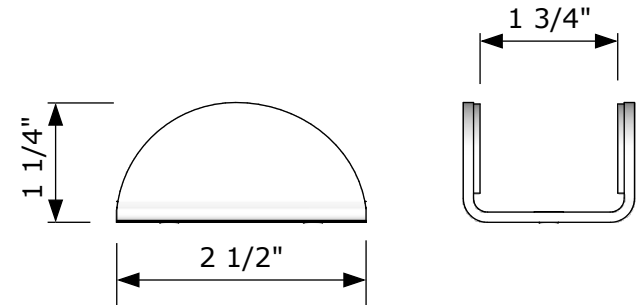
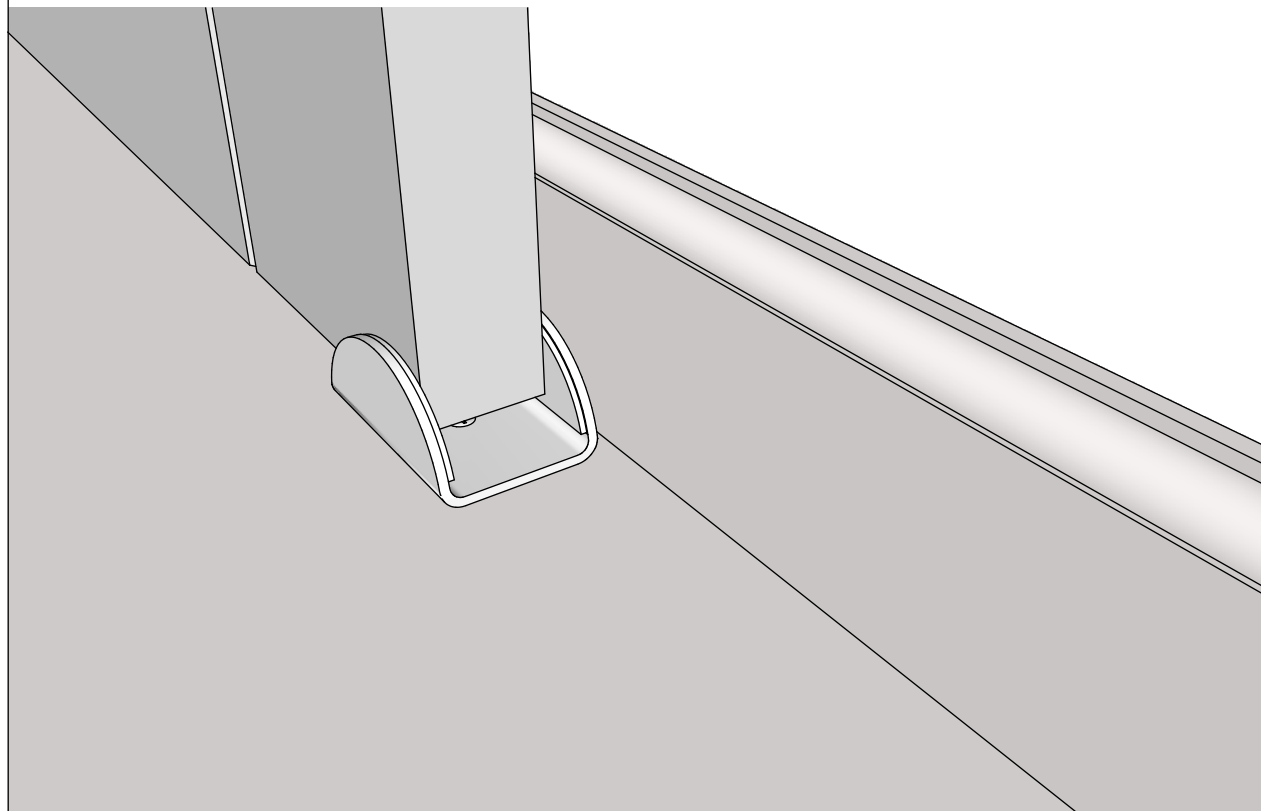
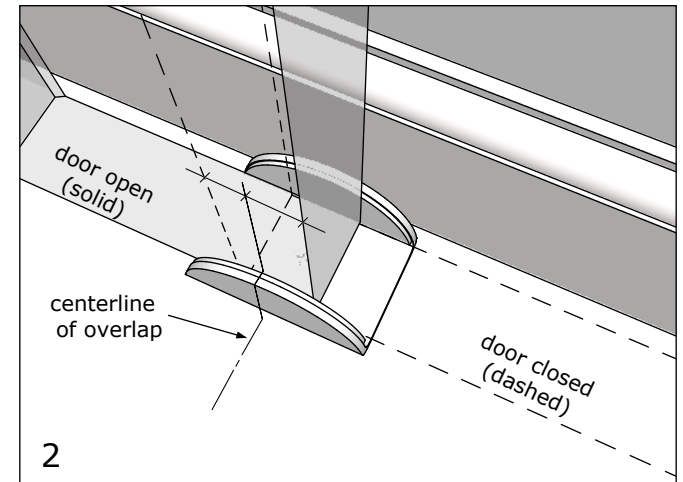
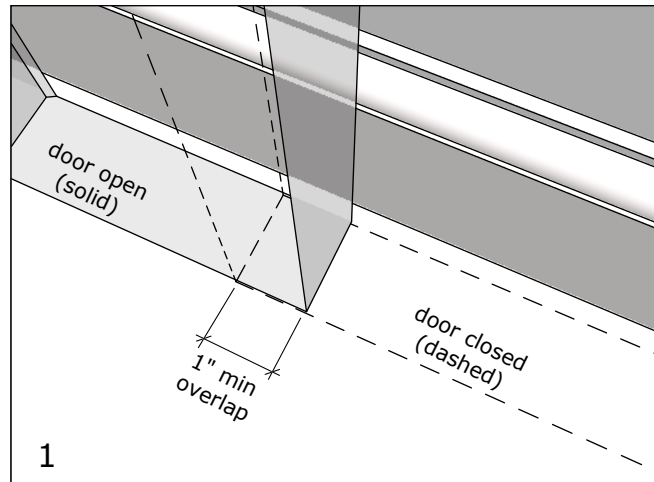
Standard Flat Track- SF-05.5 Track
Length: 65" (One-Piece Track)

To install:

Determine how wide the door 'overlap' will be. The overlap is the distance between the leading edge of the door when fully open, and the trailing edge of the door when fully closed (1).

Mark centerline of overlap and place center of guide on line (2).

Predrill and install on floor so door will hang plumb.



General Notes:

For use when slotting the bottom of door for 'T' type guide is not desired or not possible.

Single mounting screw allows easy installation and alignment.

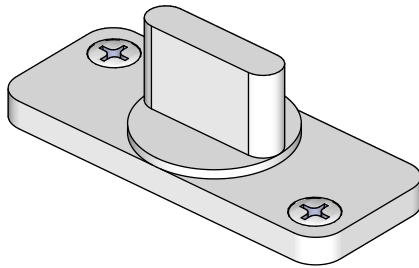
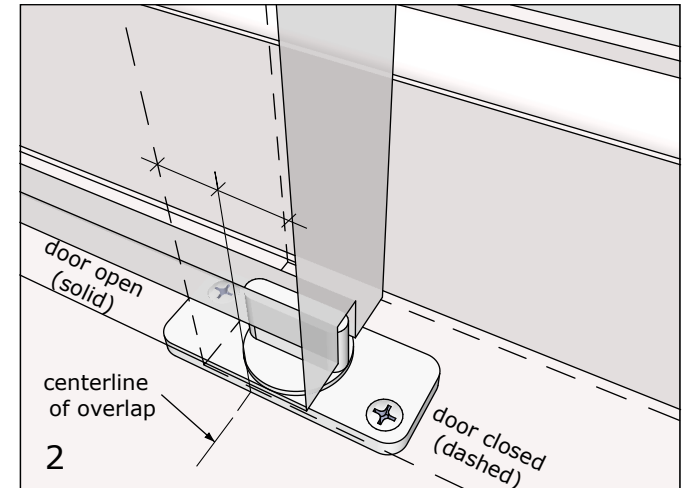
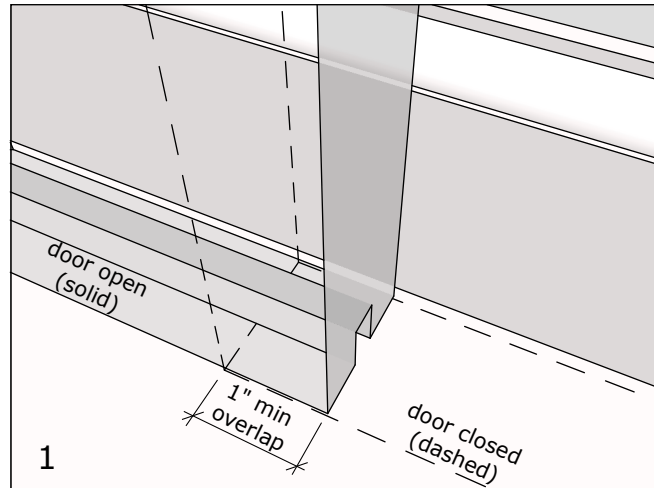
Smooth, high strength glide plastic guides door gently and quietly.

To install:

Determine how wide the door 'overlap' will be. The overlap is the distance between the leading edge of the door when fully open, and the trailing edge of the door when fully closed (1).

Mark centerline of overlap and place center of guide on line (2).

Predrill and install on floor so door will hang plumb.

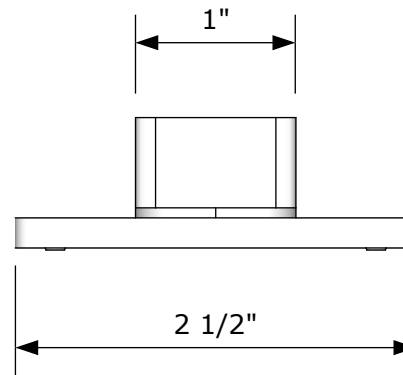


General Notes:

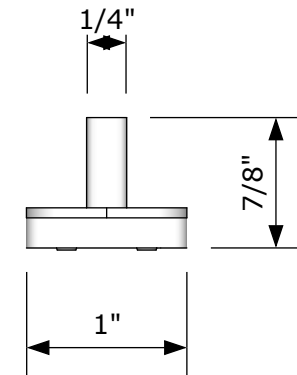
For use in wood doors when a semi-concealed look is desired.

Requires a 5/16"W x 1/2"H continuous slot in bottom of door

Smooth, high strength glide plastic guides door gently and quietly.



FRONT VIEW



SIDE VIEW